

GOODSPEED MUSICALS

2010 SEASON

Roald Dahl's
*James
and the
Giant Peach*

A new musical



featuring Pilobolus

Celebrating 20 years of preserving dignity through independence at home.

Connecticut's Most Trusted Home Care Provider Since 1990.



Companions & Homemakers™

"We know what you're going through"™

1-800-348-HOME (4663)

*Companions
Live-In or Hourly*

*Homemakers
Personal Care Service*

Fully Bonded and Insured • All Taxes Paid
CT DCP HCA 0000101

CompanionsandHomemakers.com • Serving All of Connecticut

Exceptional Caring...



Aaron Manor
Chester, CT
860.526.5316

Greentree Manor
Waterford, CT
860.442.0647

Bel-Air Manor
Newington, CT
860.666.5689

Lord Chamberlain
Stratford, CT
203.375.5894

Cheshire House
Waterbury, CT
203.754.2161

Mystic Healthcare
Mystic, CT
860.536.6070

Company founders are winners of the CAHCF Lifetime Achievement Award for delivering the highest quality nursing and rehabilitation care.

- Short-Term Rehabilitation
- Wellness Services
- Outpatient Therapy

Charting Your Course To Health



Ryders Health Management
Nursing & Rehabilitation Centers
www.rydershealth.com

You've got a life to live...

We'll get you back there!

APPLE REHAB

Saybrook



Featuring expanded programs and services designed to meet the needs of today's post operative and short term rehabilitation patient.

Specializing in:

- Post Surgical Recovery
- Short Term Rehabilitation
- Medical Management

Apple Rehab Saybrook

1775 Boston Post Road • Old Saybrook, CT 06475 • 860.399.6216
apple-rehab.com



GOODSPEED MUSICALS®

what's inside

- James and the Giant Peach* | 11
- Cast of Characters | 12
- Musical Numbers | 13
- Who's Who | 15
- Notes from the Playwright | 20
- History of The Norma Terris Theatre | 24
- William H. Goodspeed Legacy Society | 26
- The Goodspeed Opera House Foundation | 27
- Goodspeed Musicals Staff | 33
- For Your Information | 34

Audio and video recording and photography are prohibited in the theatre.

Please turn off your cell phone, beeper, watch alarm or anything else that might make a distracting noise during the performance. Unwrap any candies, cough drops, or mints before the performance begins to avoid disturbing your fellow audience members or the actors on stage. We appreciate your cooperation.

Editor Lori A. Cartwright



ADVERTISING

OnStage Publications
 937-424-0529 | 866-503-1966
 e-mail: korlowski@jusbiz.com
www.onstagepublications.com

The Goodspeed Musicals program is published in association with OnStage Publications, 1612 Prosser Avenue, Kettering, OH 45409. The Goodspeed Musicals program may not be reproduced in whole or in part without written permission from the publisher. JBI Publishing is a division of OnStage Publications, Inc. Contents © 2010. All rights reserved. Printed in the U.S.A.

**THE
CORNER**

**FAMILY
RESTAURANT**

UNDER NEW
OWNERSHIP

FAMILY OWNED & OPERATED

Open for
BREAKFAST, LUNCH & DINNER
Tuesday through Sunday

HOMEMADE COOKING
& DAILY SPECIALS

OUTSIDE DINING AVAILABLE

*On the Corner of Town Street
and Route 82 in East Haddam*

860.873.8080

WE NOW ACCEPT

Experience the Difference

We offer an Extensive Collection of Fine Jewelry
Gold • Silver • Platinum

RUSSELL D. CUNNINGHAM
Designer - Goldsmith

GALLERY HOURS:
Wednesday - Friday 10:00 - 5:00 p.m. Saturday 10:00 - 4:00 p.m.


Exceptional Quality and Service
Original Designs in Precious Metals
Custom Work • Fine Diamonds • Gemstones

DEEP RIVER DESIGN
381 Main Street • Deep River, Connecticut
860-526-9270
www.deepriverjewelrydesign.com

Experience ESSEX

C O N N E C T I C U T

HISTORIC SEAPORT CHARM. Fine shops, restaurants, cultural attractions, and inns.



a taste for *History*

- Acclaimed Dining
- Award-winning Taproom
- Nightly Entertainment
- Stunning Wine Bar
- Charming Accommodations

NEW - The Griswold Inn Store

THE **GRISWOLD** INN
SINCE 1776

36 MAIN STREET | ESSEX, CT 06426
860.767.1776 | GRISWOLDINN.COM

3 Great Shops in Essex

English Accents Antiques

Shoreline's largest direct importer of fine antique English furniture.

Informal yet elegant

4 North Main Street • 860.767.0113
www.englishaccents-ct.com

Weltner's Antiques & Art

Nautical and country

6 Ferry Street • (860) 767-3987
pgills@hotmail.com

LORD NELSON'S ANTIQUES

Maritime antiques

One Main Street • Essex, CT 06426
(860) 767-0257
Lordnelsonsantiques.com

DIVE INTO HISTORY

at the Connecticut River Museum



DISCOVER NEW ENGLAND'S GREAT RIVER. 410 MILES OF WATER AND 450 YEARS OF HISTORY.



RIVER CRUISES

Sail aboard a historic schooner. Seasonal daily cruises and group tours available.



INTERACTIVE EXHIBITS

Climb aboard the world's first submarine. Experience the 1814 British Raid on Essex.




SPECIAL EVENTS

Don't miss the annual Burning of the Fleet Day and the Family Maritime Festival.



EDUCATION

Explore the River with hands-on workshops, school programs, and summer camps.



RIDE AND DINE

Make Any Occasion Special

ESSEX CLIPPER DINNER TRAIN

Located at Essex Steam Train & Riverboat
800-377-3987 • essexsteamtrain.com

A Relaxation DESTINATION



63 South Main St.
Essex, CT
860-767-7796

www.thespaofessex.com

Relaxation ∞ Renewal ∞ Results



Connecticut River Museum

67 MAIN STREET
ESSEX, CT 06426

860-767-8269
www.ctrivermuseum.org

visit: www.EssexCT.com

*“Proudly supports the
Goodspeed Opera House”*



*“To find fish any fresher, you'd probably have to throw out
a line and catch them yourself.”*

The New York Times July 29, 2007



1400 Boston Post Road • Old Saybrook, CT 06475
(860) 388-4527

EMC = European Motorcars



Very Smart.

EUROPEAN  MOTORCARS

Sales | Service | Collision Center

860-632-2355

Newfield St., Middletown

www.european-motorcars.com



Your event is the most important
that we will ever create.

WEDDINGS PRIVATE PARTIES OFF-SITE CATERING BUSINESS EVENTS



55 Bridge Road | Haddam, CT 06438 | 860.345.4100 | www.theriverhouse.com

Coldwell Banker Residential Brokerage

LEADING THE
LUXURY HOME MARKET...



...LOCALLY AND
AROUND THE WORLD



RESIDENTIAL BROKERAGE

OLD LYME
86 Halls Road
860.434.8600

OLD SAYBROOK
48 Main Street
860.388.1100

ESSEX
3 Main Street
860.767.2636

www.ColdwellBankerMoves.com



©2010 Coldwell Banker Real Estate LLC. Coldwell Banker is a registered trademark licensed to Coldwell Banker Real Estate LLC. An Equal Opportunity Employer. Equal Housing Opportunity. Owned and operated by NRT LLC. REG485 03/10

*Spotlight
on
Diamonds*



Diamond search at www.LBGreen.com

LUX BOND & GREEN

JEWELRY • WATCHES • GIFTS • SINCE 1898

Wedding & Gift Registry

West Hartford Glastonbury South Windsor Greenwich Westport

Mohegan Sun Boston Wellesley 1.800.524.7336



Roald Dahl's
James and the Giant Peach

Music and Lyrics by
BENJ PASEK and
JUSTIN PAUL

Book by
TIMOTHY ALLEN McDONALD

Based on the book by
ROALD DAHL

with

**OTIS COOK DENNY DILLON HEATHER JEANE FAVRETTO ELLIS GAGE NICK GASWIRTH RUTH GOTTSCHALL
JUSTIN LAWRENCE HALL JESSICA HERSHBERG CHELSEA KROMBACH EDWIN OLVERA
ROBERTO OLVERA DESTAN OWENS MARISSA PALLEY NICHOLAS PARK STEVE ROSEN
ANNIKA SHEAFF JIM STANEK DEREK STRATTON KATE WETHERHEAD MINAMI YUSUI**

Scenic Design by
CHRISTOPHER H. BARRECA

Lighting Design by
STEPHEN STRAWBRIDGE

Sound Design by
JAY HILTON

Orchestrations by
AUGUST ERIKSMOEN

Dance Arrangements by
SAM DAVIS

Vocal Arrangements by
JUSTIN PAUL

Casting by
**STUART HOWARD,
AMY SCHECTER, &
PAUL HARDT**

Assistant Director
MADDIE KELLY

Production Stage Manager
BERNITA ROBINSON

Technical Director
ADAM GOODRUM

Music Direction by
CHRIS FENWICK

Choreographed by
MICHAEL TRACY / PILOBOLUS

Directed by
GRACIELA DANIELE

GOODSPEED MUSICALS

Executive Director
MICHAEL P. PRICE

Associate Producer
BOB ALWINE

Line Producer
DONNA LYNN COOPER HILTON

Music Director
MICHAEL O'FLAHERTY

General Manager
HARRIETT KITTNER

Production Manager
R. GLEN GRUSMARK

First Performance: October 21, 2010

Goodspeed Musicals is dedicated to the heritage of the musical and the development of new works to add to the repertoire.

Sponsored by:



Cast of Characters

(In order of appearance)

Mrs. Trotter **CHELSEA KROMBACH**
Mr. Trotter **JIM STANEK**
James **JUSTIN LAWRENCE HALL**
Marvo the Magician **STEVE ROSEN**
Spiker **RUTH GOTTSCHALL**
Sponge **DENNY DILLON**
Spider **KATE WETHERHEAD**
Green Grasshopper **JIM STANEK**
Centipede **NICK GASWIRTH**
Ladybug **CHELSEA KROMBACH**
Earthworm **DESTAN OWENS**

ENSEMBLE

NICK GASWIRTH JESSICA HERSHBERG CHELSEA KROMBACH DESTAN OWENS
MARISSA PALLEY NICHOLAS PARK JIM STANEK KATE WETHERHEAD MINAMI YUSUI

PILOBOLUS

OTIS COOK HEATHER JEANE FAVRETTO EDWIN OLVERA
ROBERTO OLVERA ANNIKA SHEAFF DEREK STRATTON

DANCE CAPTAIN

NICK GASWIRTH

ASSISTANT STAGE MANAGER

MEG FRIEDMAN

UNDERSTUDY

James **ELLIS GAGE**

MUSICIANS

Conductor/Keyboard **CHRIS FENWICK**; Bass **CHRISTOPHER CONTE**; Percussion **CHRIS JOHNSON**

Musical Numbers

ACT I

<i>Perfectly Perfect</i>	The Company
<i>Shuffle On Through</i>	The Company
<i>Property of Spiker and Sponge</i>	Spiker, Sponge, Ensemble
<i>On Your Way Home</i>	James, Pilobolus
<i>Shake It Up</i>	James, Marvo, The Company
<i>Shake It Up (Reprise)</i>	The Company
<i>Money On That Tree</i>	The Company
<i>Middle of a Moment</i>	James, Insects, Pilobolus
<i>Perfectly Perfect (Reprise)</i>	The Company

ACT II

<i>Floatin' Along</i>	James, Insects, Pilobolus
<i>A Getaway for Spiker and Sponge</i>	Spiker, Sponge
<i>Shark Attack</i>	Pilobolus
<i>Plump and Juicy</i>	James, Insects, Pilobolus
<i>I Got You</i>	Spiker, Sponge
<i>Black Magic</i>	Marvo, Spiker, Sponge
<i>James' Nightmare</i>	Pilobolus
<i>Everywhere That You Are</i>	James, Grasshopper, Ladybug
<i>On Your Way Home (Reprise)</i>	James
<i>Welcome Home</i>	The Company

Program subject to change

Out of respect for our actors and your fellow theatergoers, we ask that you remain seated until the curtain calls are over and the house lights have come up. The use of cameras, cellular phones, or recording devices is not permitted in the theatre. Thank you.

To Our Members

Thank You

for your help in making this
an outstanding season!

We look forward to seeing you in 2011.

GOODSPEED MUSICALS

Now Playing

Goodspeed Opera House



Ends Nov 28

LIBERTY
BANK

Continental
Airlines

860.873.8668 • goodspeed.org



WHO'S WHO



RUTH GOTTSCHALL* (*Spiker*) has appeared in 10 Broadway shows, most recently originating “the nastiest nanny in the world,” Miss Andrew in *Mary Poppins*. She has also danced in the ballet company at

Radio City, toured with Liza Minnelli, and performed at the Kennedy Center, Carnegie Hall, and New York City Opera.



JUSTIN LAWRENCE HALL* (*James*) age 12, is on top of the world in this “PEACHY” role! National: *Mary Poppins* (Michael Banks), Regional: *Shenandoah* (Robert Anderson), Off-Broadway: *A Christmas Carol* (Tiny Tim).

Indie films, television, music videos, voiceover, and modeling (www.thehallbrothers.com). Portledge School 6th grader, musician (guitar, bass, piano), and athlete. XOXO my family and friends, Howard, Pamela, Larry, Mom and Goodspeed’s creative team!



DENNY DILLON* (*Sponge*) Broadway: made her debut in *Gypsy* starring Angela Lansbury, *My One and Only* (Tony nomination), *Enchanted April*, *Harold & Maude*, *Skin of Our Teeth* (Elizabeth Ashley). TV:

“Saturday Night Live” cast member, HBO’s “Dream On” (CableACE Award-Best Actress in a Comedy Series), “Night Court,” “Designing Women.” Film: *Saturday Night Fever*, *Ice-Age*, *United 93*.



STEVE ROSEN* (*Marvo*) Broadway Original Casts: *Monty Python’s Spamlot*, *The Farnsworth Invention*, *Guys and Dolls* (2009). Co-Creator, *Don’t Quit Your Night Job*. Co-author of the musical *V-Day*, recent world premiere at the New York Musical Festival. TV:

“Kings,” “Law & Order,” “Five Year Plan,” “Ed.” Film: *Arthur*, *Losing Control*, *Kevin’s Couch*, *Storytelling*. This one’s for Max Leavitt.



OTIS COOK (*Pilobolus*) Dancer/choreographer Pilobolus Dance Theatre since 1998; currently serves as a creative director. Works: film *The Last Dance*, 79th Annual Academy Awards, *Late*

Night with Conan O’Brien. Choreographed/toured with Diavolo Dance Theater and MOMIX; founded Movement Under Development; co-produced, choreographed, and starred in *GRIMM*, an infusion of dance, theater, puppetry and aerial silk.



HEATHER JEANE FAVRETTO

(*Pilobolus*) is co-artistic director of Glitterati. She was choreographer for Terra Firma Dance Theatre and Nimbus Dance Works. Heather currently performs with Naganuma

Dance, Douglas Dunn and Dancers, John Evans and Dancers; and as guest artist with Tze Chun Dance Company, Nimbus Dance Works, Cleo Mack Dance Project, Terra Firma Dance Theatre.



NICK GASWIRTH* (*Centipede*,

Ensemble) NY/Regional: *Minnie’s Boys*, *Knickerbocker Holiday* (York Theatre), *The Full Monty* (Westchester Broadway), *Candide*, *A Year With Frog and Toad* (Arden Theatre Co.).

Featured in *John Tartaglia’s Imagenocean!* (New World Stages). BFA in Musical Theatre, University of Michigan (Go Blue!). Member AEA. Love and thanks to friends, family, and Pants.



JESSICA HERSHBERG* (*Ensemble*)

Tours/New York: *Little House on the Prairie* (Mary), *Idaho!* (NYMF, “Best of Fest”). Regional: Arden Theatre, MUNY, PCLO (Alice in *Seven Brides*). A GIANT thank you

to Benj and Justin! Love to my family always. Jessica is a proud graduate of The University of Michigan. GO BLUE! For Melody.

*Member of Actors’ Equity Association, the Union of Professional Actors and Stage Managers in the United States.



WHO'S WHO



CHELSEA KROMBACH* (*Ladybug, Ensemble*) Goodspeed Debut! Chelsea is taking a brief leave from the Broadway company of *Promises, Promises* to be a part of this production! Other Broadway: *Wicked*,

Elphaba u/s. National Tour: *Wicked*, *Nessarose* u/s. Regional: Amneris in Music Theatre of Wichita's *Aida*, *Godspell* at St. Louis Muny. Proud Michigan grad. Love to Geoff!!!



EDWIN OLVERA (*Pilobolus*) at age 21 - with no formal dance training - joined UW-Milwaukee Peck's School of the Arts and fell in love with contact improvisation and partnering. He joined *Pilobolus* in August 2005

and toured internationally with them until 2008. He still works with *Pilobolus Creative Services* and its Institute.



ROBERTO OLVERA (*Pilobolus*) received a BA in Dance from UW-Milwaukee Peck's School of the Arts. He began his professional career touring with *MOMIX* from 2005 to 2008. He was also a Combat Medic for the US Army Reserve, serving an eight year contract. Roberto has been working for *Pilobolus* since 2006.



DESTAN OWENS* (*Earthworm, Ensemble*) B.A. Oklahoma City University. Film: *Get Rich or Die Tryin'*, *Across the Universe*. TV: "30 Rock 'The Break-up'" (Black Niles). Stage: Broadway: *Rent* (Collins), *Chicago* (Billy), *Smokey Joe's Café* (Adrian), *The Who's Tommy 15th Anniversary Concert* (Hawker), *The Who's Tommy* (Hawker and Specialist). National Tour: *Dreamgirls* (C.C.), *Jesus Christ Superstar Gospel* (Pilate).



MARISSA PALLEY (*Ensemble*) has danced with choreographers David Parker, Sara Rudner, Anneke Hansen and Stephan Koplowitz, both in New York and on tour. Regional theater credits include *Mame*, *Singin'*

in the Rain, and *Beauty and the Beast*. B.A. in English and Dance from Barnard College. Performances are dedicated to my family.



NICHOLAS PARK* (*Ensemble*) is honored to join this beautiful adventure! Off-Broadway: *Dear Edwina*. Regional: *Fiddler on the Roof*, *Honor and the River* (Walnut Street), *Rent* (John W. Engeman).

University of the Arts, B.F.A. Musical Theatre. So much LOVE to the amazing cast and crew, the Goodspeed family, Graciela, Tim, Benj, and Justin, and to my friends and especially family.



ANNIKA SHEAFF (*Pilobolus*) has been dancing since age 3. She graduated from the Juilliard School in 2006. There she performed works by Paul Taylor, Ohad Naharin, Ron Brown, and Jose Limon, to name a few. She immediately joined *Pilobolus Dance Theater* and toured the world for 4 years.



JIM STANEK* (*Grasshopper, Ensemble*) Broadway: *The Story of My Life*, **Lestat*, *Little Women*, *The Rivals*, **A Funny Thing Happened...*, *Indiscretions*. Off-Broadway: **Frankenstein*, *Jacques*

Brel..., *Slut*, *Love...Perfect...Change*. Regional: *The Producers*, *Ace*, *Carnival!*, *Threepenny Opera*, **3hree Musketeers*, *Thoroughly Modern Millie*. Film: *Bella*, *Borough of Kings*. Education: Carnegie Mellon. Inspiration: Beth and our three boys. Distraction: Action Figures. * = recordings.

*Member of Actors' Equity Association, the Union of Professional Actors and Stage Managers in the United States.



WHO'S WHO



DEREK STRATTON (*Pilobolus*) was born and raised in Norwich, NY. He received a BA in Dance from Brockport College in 2002. He performed/choreographed for the Rochester City Ballet and the Phoenix Project Dance Theatre, 2002 to the present. For the past two years Derek has enjoyed traveling around the globe with Pilobolus Dance Theatre.



KATE WETHERHEAD* (*Spider, Ensemble*) Goodspeed: *Emmett Otter's Jug-Band Christmas*. Broadway: *Spelling Bee, Legally Blonde*. Off-Broadway: *Ordinary Days; Sarah, Plain and Tall; Wood; Tatjana in Color*. Regional: *It's a Bird, It's a Plane, It's Superman!* (Dallas Theater Center); *Steel Magnolias* (Paper Mill); *The Spitfire Grill* (Skylight Opera); *Almost, Maine* (Saint Michael's). Web Series: *Submissions Only*.



MINAMI YUSUI (*Ensemble*) is thrilled and grateful to be part of this journey! Credits include: *Wicked* (Japan), *Disney's Beauty and The Beast* (Japan), *South Pacific* (Liat), *Cats* (Rumpleteaser) and *Miss Saigon* (Yvette) at Maine State Music Theatre, *The King and I* at Arkansas Rep. A native of Kanazawa, Japan. Much love to family, friends, and Dan.



ELLIS GAGE (*James understudy*) is thrilled to be making his Goodspeed debut! He's been in dozens of musical theater productions/operettas in the Boston area. He sends his love and sincere gratitude to his family, the Rands, Nancy Carson, and Amelia DeMayo, for without them, this adventure would not be possible.

BENJ PASEK (*Music & Lyrics*) Current projects: *A Christmas Story* (5th Ave Theatre) and *Dogfight* (commissioned by Lincoln Center Theater). Other works: *Edges* (licensed by Music Theatre International, 100+ productions worldwide), "Johnny and the Sprites" (Disney TV series), *Duck for President* and *If You Give a Pig...* (Theatreworks USA). Honors: 2007-2008 Dramatists Guild Fellowship, Jonathan Larson songwriting award. Graduate, University of Michigan. Special thanks to my loving and supportive parents, brothers and friends, and to the entire James family for accompanying me on this incredible journey.

JUSTIN PAUL (*Music & Lyrics*) Current projects: *A Christmas Story* (5th Ave Theatre) and *Dogfight* (commissioned by Lincoln Center Theater). Other works: *Edges* (licensed by Music Theatre International, 100+ productions worldwide), "Johnny and the Sprites" (Disney TV series), *Duck for President* and *If You Give a Pig...* (Theatreworks USA). Honors: 2007-2008 Dramatists Guild Fellowship, Jonathan Larson songwriting award. Graduate, University of Michigan. Love to my wife, Asher, and my amazingly supportive family. Thanks and praise to God for this opportunity!

TIMOTHY ALLEN McDONALD (*Book*) began imagining this musical of *James* in the third grade because Mrs. Spencer *forced* him to read the stupid book. Bless you, Mrs. Spencer. He's written a handful of other musicals, directed even more, helped create Broadway Junior, and founded iTheatrics. Tim dedicates *James* to the memory of his dad Tom, who would call him weekly asking "How you gonna do the insects?" or "How's the peach gonna fly?" Well, Dad...now we all know.

GRACIELA DANIELE (*Director*) has directed on Broadway, at Lincoln Center, and the Public Theater, and has earned ten Tony nominations and six Drama Desk nominations. Her Broadway Director/Choreographic credits include *Chita*

*Member of Actors' Equity Association, the Union of Professional Actors and Stage Managers in the United States.



WHO'S WHO

Rivera: The Dancer's Life, Annie Get Your Gun, Marie Christine, Chronicle of a Death Foretold, and Once on This Island. She has Musical Staged/Choreographed such shows as *Ragtime, Zorba,* and *The Rink,* and has choreographed three films for Woody Allen, 2 Fosse Awards. Other Awards: George Abbott Award, Theater Hall of Fame. Most recently, she has choreographed *Armida* for the Metropolitan Opera. Resident Director at Lincoln Center Theater.

MICHAEL TRACY (*Choreographer*) has been Co-Artistic Director of Pilobolus since graduating from Dartmouth College in 1973. He taught at Yale for 19 years and set work on the Joffrey, Ohio, Hartford, Nancy, and Verona Ballets, the National Theater of the Deaf, and a production of *The Magic Flute* for John Eliot Gardiner. Mr. Tracy lives with his wife and two sons in northwestern Connecticut.

PILOBOLUS (*Choreography*) began in 1971 as an outsider dance company, quickly becoming renowned for its imaginative and athletic exploration of creative collaboration. It evolved into a pioneering American cultural institution; its many diverse activities – radically innovative concert dance-theater, unique educational programming, and movement services – originated from Pilobolus' abiding faith in the creative power of groups. The company tests its collaborative methods in different media and new configurations every day as it sets a path for the next 40 years.

CHRIS FENWICK (*Music Direction*) most recently musical directed the premiere of Michael John LaChiusa's *Giant.* He musical directed the Public Theater's productions of *See What I Wanna See* and *Mother Courage and Her Children* starring Meryl Streep. Broadway credits include *The Pajama Game, Grease, Les Liaisons Dangereuses, Wonderful Town,* and *Elaine Stritch At Liberty.* Off-Broadway credits include *Here Lies Jenny, Road Show,* and

Happiness. Musical director for Patti LuPone at Carnegie Hall, Lincoln Center, Ravinia Festival, and many more.

AUGUST ERIKSMOEN (*Orchestrations*) Broadway credits: *Addams Family* (Dance Arrangements), *Memphis* (Dance Arrangements), *Million Dollar Quartet* (Associate Music Supervisor), *Ring of Fire* (Associate Music Director), *All Shook Up* (Music Director), *Rent* (Associate Conductor). Off Broadway: *Romantic Poetry* (Orchestrations), *Walmartopia* (Orchestrations/Supervision), *Imperfect Chemistry* (Orchestrations/Supervision). Tours/Regional: *All Shook Up* First National (Dance Arrangements/additional orchestrations), *The Full Monty* First National (Conductor). Other orchestration credits: *The Unauthorized Autobiography of Samantha Brown, Always...Patsy Cline, Honky Tonk Angels, Berlin,* Disney's *Winnie The Pooh.*

SAM DAVIS (*Dance Arrangements*) Goodspeed: *Radio Girl, Seven Brides for Seven Brothers, Li'l Abner, High Button Shoes.* Broadway: *Curtains, Follies, The Apple Tree.* With Henry Krieger: music supervisor for *Dreamgirls* (Apollo Theater, National Tour, Seoul, Johannesburg). *Romantic Poetry* (Manhattan Theatre Club), *Up in the Air* (Kennedy Center). London: *Bridget Jones' Diary* (workshop). As composer: *The Scottish Musical* (Penn State Festival), forthcoming CD *Love on a Summer Afternoon: Songs of Sam Davis* (P.S. Classics). Winner of the Jonathan Larson Award and graduate of the University of Michigan.

CHRISTOPHER H. BARRECA (*Scenic Design*) 200 scenic designs. Broadway Musicals: *Marie Christine* and *Chronicle of a Death Foretold* (American Theatre Wing Award), both directed by Graciela Daniele; *Search and Destroy, Our Country's Good, The Violet Hour.* Off-Broadway: *Three Days of Rain* (Drama Desk Nomination), *Everett Beekin, Bernarda Alba, Roberto Zucco.* Regional Musical Premieres: *Herringbone, Captains*

**Member of Actors' Equity Association, the Union of Professional Actors and Stage Managers in the United States.*



WHO'S WHO

Rivera: The Dancer's Life, Annie Get Your Gun, Marie Christine, Chronicle of a Death Foretold, and Once on This Island. She has Musical Staged/Choreographed such shows as *Ragtime, Zorba,* and *The Rink,* and has choreographed three films for Woody Allen, 2 Fosse Awards. Other Awards: George Abbott Award, Theater Hall of Fame. Most recently, she has choreographed *Armida* for the Metropolitan Opera. Resident Director at Lincoln Center Theater.

MICHAEL TRACY (*Choreographer*) has been Co-Artistic Director of Pilobolus since graduating from Dartmouth College in 1973. He taught at Yale for 19 years and set work on the Joffrey, Ohio, Hartford, Nancy, and Verona Ballets, the National Theater of the Deaf, and a production of *The Magic Flute* for John Eliot Gardiner. Mr. Tracy lives with his wife and two sons in northwestern Connecticut.

PILOBOLUS (*Choreography*) began in 1971 as an outsider dance company, quickly becoming renowned for its imaginative and athletic exploration of creative collaboration. It evolved into a pioneering American cultural institution; its many diverse activities – radically innovative concert dance-theater, unique educational programming, and movement services – originated from Pilobolus' abiding faith in the creative power of groups. The company tests its collaborative methods in different media and new configurations every day as it sets a path for the next 40 years.

CHRIS FENWICK (*Music Direction*) most recently musical directed the premiere of Michael John LaChiusa's *Giant.* He musical directed the Public Theater's productions of *See What I Wanna See* and *Mother Courage and Her Children* starring Meryl Streep. Broadway credits include *The Pajama Game, Grease, Les Liaisons Dangereuses, Wonderful Town,* and *Elaine Stritch At Liberty.* Off-Broadway credits include *Here Lies Jenny, Road Show,* and

Happiness. Musical director for Patti LuPone at Carnegie Hall, Lincoln Center, Ravinia Festival, and many more.

AUGUST ERIKSMOEN (*Orchestrations*) Broadway credits: *Addams Family* (Dance Arrangements), *Memphis* (Dance Arrangements), *Million Dollar Quartet* (Associate Music Supervisor), *Ring of Fire* (Associate Music Director), *All Shook Up* (Music Director), *Rent* (Associate Conductor). Off Broadway: *Romantic Poetry* (Orchestrations), *Walmartopia* (Orchestrations/Supervision), *Imperfect Chemistry* (Orchestrations/Supervision). Tours/Regional: *All Shook Up* First National (Dance Arrangements/additional orchestrations), *The Full Monty* First National (Conductor). Other orchestration credits: *The Unauthorized Autobiography of Samantha Brown, Always...Patsy Cline, Honky Tonk Angels, Berlin,* Disney's *Winnie The Pooh.*

SAM DAVIS (*Dance Arrangements*) Goodspeed: *Radio Girl, Seven Brides for Seven Brothers, Li'l Abner, High Button Shoes.* Broadway: *Curtains, Follies, The Apple Tree.* With Henry Krieger: music supervisor for *Dreamgirls* (Apollo Theater, National Tour, Seoul, Johannesburg). *Romantic Poetry* (Manhattan Theatre Club), *Up in the Air* (Kennedy Center). London: *Bridget Jones' Diary* (workshop). As composer: *The Scottish Musical* (Penn State Festival), forthcoming CD *Love on a Summer Afternoon: Songs of Sam Davis* (P.S. Classics). Winner of the Jonathan Larson Award and graduate of the University of Michigan.

CHRISTOPHER H. BARRECA (*Scenic Design*) 200 scenic designs. Broadway Musicals: *Marie Christine* and *Chronicle of a Death Foretold* (American Theatre Wing Award), both directed by Graciela Daniele; *Search and Destroy, Our Country's Good, The Violet Hour.* Off-Broadway: *Three Days of Rain* (Drama Desk Nomination), *Everett Beekin, Bernarda Alba, Roberto Zucco.* Regional Musical Premieres: *Herringbone, Captains*

**Member of Actors' Equity Association, the Union of Professional Actors and Stage Managers in the United States.*



NOTES FROM THE PLAYWRIGHT

by Timothy Allen McDonald



I was an eight-year-old who hated reading. But I had a very clever, Miss Honey of a teacher who challenged me to read “just the first page” of a strange looking book titled *James and the Giant Peach* by a guy with the very weird name of Roald Dahl. Armed with the book, and totally peeved at having an assignment that nobody else in the class had to do, I started to read “just the first page” and didn’t put the book down until I had read it cover to cover. Dahl’s masterful storytelling not only introduced me to James’ world, it introduced me to my own imagination. And you know what? That sneaky imagination of mine began dreaming up this musical during that very first read. I can legitimately claim I’ve been working on this musical for 39 years. That’s gotta be a record of some sort, right?

Reading the story as an adult, I became very aware that at the core of this book is every parent’s worst fear: the horror of dying and leaving your child alone in the world. Dahl places this horrific event on the very first page of the book just to make sure he’s got everyone’s attention. Not your average kiddie fodder this book. Oh, no!

Years later I found myself with the rights to adapt *James* for the stage, and the search to find the perfect collaborators began. I immediately reached out to my colleague and partner in crime, Steve Gabriel, and together we began to build our dream team. Describing to Steve the European tradition of physical theatre led us to Pilobolus. Our amazingly gifted music makers, Justin and Benj, seemed to appear out of thin air at exactly the right time and instantly feel like long-lost brothers. And we have Julie Andrews to thank in a roundabout way for bringing us our mother-defender-goddess-force-of-nature that is Graciela Daniele.

None of this would have mattered much if we didn’t have the support and resources of Goodspeed. There’s nothing like being sequestered in the woods of Connecticut to really focus everyone on creating the best musical possible or go mad trying. I’m pretty sure we’ve managed to accomplish a little of both.

This production is purposefully focused *exclusively* on getting the storytelling right—not on sets and costumes—those will come in future productions. And just as we have been slaves to the storytelling, we will require any future production values to serve this same master.

You’re about to enter our collective imaginations and I warn you it’s not always a pretty place. You are going to experience James’ journey first hand, complete with the dreams that wake you in the middle of the night screaming in terror, and the ones that bring you home to the family that loves you, even if you’re eight and you hate to read.

Share the magic with a Goodspeed Gift Certificate!



Always the right size.
Always the right color.
Always Appreciated!

Call or visit our Box Office 860.873.8668
Purchase on-line anytime at goodspeed.org

Gift Certificates are available in any denomination and may be redeemed for tickets to any of our performances.

stamps
com

An approved licensed vendor
 UNITED STATES
POSTAL SERVICE®
PC Postage

Your Desktop

Post Office™

Print official U.S. postage
right from your PC and
printer.

- ▶ Never go to the Post Office™ again!
- ▶ Print exact postage and address in one step.
- ▶ The fastest, easiest way to send letters and packages.
- ▶ Save up to 80% compared to a postage meter.



1 Click



2 Print



3 Postage

4-week trial plus

\$100 Offer

To get the offer, you **MUST** enter
the promo code **print161**

www.stamps.com/2009



PLACES EVERYONE.

The most international destinations.

Proud supporter of Goodspeed Musicals.

continental.com



Continental Airlines

A STAR ALLIANCE MEMBER 

**Work Hard.
Fly Right.®**

Continental Airlines operates to more international destinations than any other U.S. airline. © 2010 Continental Airlines, Inc.



*Gratefully Acknowledges the Following
Supporters for 2010*

CORPORATE SUPPORT

ASCAP
Amica Insurance
Bank of America
COMCAST
Connecticut Light & Power
Continental Airlines
Essex Savings Bank
Hoffman Audi
The Inn at Middletown
Liberty Bank
Mohegan Sun
Robinson & Cole LLP
The Safety Zone
Sennheiser Electronic Corporation
Shops at Mohegan Sun
The Shubert Organization, Inc.
Updike, Kelly & Spellacy, P.C.
Webster Bank
WSHU Public Radio Group
WTNH News Channel 8

FOUNDATION SUPPORT

Anonymous (2)
Acorn Alcinda Foundation, Inc.
The Adolph and Ruth Schnurmacher Foundation, Inc.
The Aeroflex Foundation
Aldo DeDominicis Foundation
The ASCAP Foundation - Irving Caesar Trust
The Christine E. Moser Foundation
Daphne Seybolt Culpeper Memorial Foundation
The George A. & Grace L. Long Foundation
The Max Showalter Foundation
NewAlliance Foundation
Newman's Own Foundation
The Noel Coward Foundation
Public Welfare Foundation
The Rodgers and Hammerstein Foundation
The Samuel and Rebecca Kardon Foundation
SBM Charitable Foundation, Inc.
The Shubert Foundation, Inc.
The Wachovia Wells Fargo Foundation

GOVERNMENT SUPPORT

With Support from the Connecticut
Commission on Culture & Tourism
National Endowment for the Arts



CAPITAL CAMPAIGN SUPPORT

Anonymous (1)
Mr. and Mrs. Francis G. Adams, Jr.
The Aeroflex Foundation
John and Caron Avery
David W. Bogan and Heather Hunt
Bob Boyett
Sally and Ted Carrier
Herb Chambers
Comcast

Connecticut Dept. of Economic &
Community Development
Connecticut Light & Power
Mrs. J. Noyes Crary
Alvin Deutsch
Neil and Trudi Epstein
Dr. and Mrs. David F. Frankel
Samuel S. Fuller
William J. Ginnetti, Jr.
Sondra Gilman and Celso Gonzalez-Falla
John and Joanna Hamby
Nancy and Jeffrey Hoffman
Betty Ruth and Milton Hollander
The Kitchings Family
Mary Ellen Klinck
Mr. and Mrs. Charles R. Lindberg
Mark Masselli and Jennifer Alexander
Larry and Patty McHugh
Andrew and Bonnie Lee McKirdy
Jane Anne Miller
Regina and Robert F. Neal
Eric Ort and Duff Ashmead
Mrs. Peter E. Paris
Michael and Jo-Ann Price
Hila and Saul Rosen
Dr. Anne L. Rothstein and Ms. Jane Hellman
Peter and Betsy Russell
Mr. and Mrs. Henry S. Scherer, Jr.
Richard and Mary Schneller
Mr. and Mrs. Benjamin Sevitch
Mabel and Richard Seymour
Ted and Vada Stanley
Mrs. Ashton M. Tenney, Jr.
Mr. and Mrs. DeRoy C. Thomas
Carl and Jessica Thompson
Time Warner Inc.
Mr. and Mrs. Angelo Tomasso, Jr.
Travelers
Dr. Joan E. Venditto
Lucille and Dave Viola, Sr.
Mark Wainger and Charles Taylor
Victoria and William Winterer
Jef and Kate Wolter

SPECIAL THANKS TO

Adams Media Corporation
Duncan Edwards of Audio Design International,
a division of ADI Group
Bella Rosa International, Inc.
DJ Corchin, The phazelFOZ Company, LLC
Cross Island Ferry Services, Inc.
HMS Media, Inc.
Leros Point to Point, Inc.
The Penguin Group
The Piano & Organ Warehouse
Random House



HISTORY OF THE NORMA TERRIS THEATRE

The Norma Terris Theatre was inaugurated in 1984 by Goodspeed Musicals for the development of new musicals. The theatre is named in honor of the actress Norma Terris, star of Jerome Kern's *Show Boat* and devoted patron and trustee of the Goodspeed Opera House during her later years.



Norma Terris

Miss Terris began her stage career as a young vaudeville performer, which led to her first major role in George M. Cohan's *Little Nellie Kelly*. She gained immortal acclaim as the creator of the roles of Magnolia and Kim in the original Florenz Ziegfeld 1927 production of *Show Boat*. After making two films for Fox, *Married in Hollywood* and *Cameo Kirby*, she starred for 10 seasons at the Municipal Opera Company in St. Louis.

Miss Terris first performed for Goodspeed audiences in the 1970 production of *Little Mary Sunshine*. She presided over the dedication of The Norma Terris Theatre, and in 1987 she established the Norma Terris Fund to expand the talents of individuals and to foster the vitality, excellence, and diversity of musical theatre at The Norma Terris Theatre. A beloved friend of the Goodspeed Opera House, Norma Terris is remembered for enriching the art of musical theatre with her beautiful voice, fine acting, and generous spirit.

The Norma Terris Theatre formerly was a factory built in the early 1900s for Susan Bates, Inc., which became one of the largest manufacturers of knitting needles and needlework accessories. In 1982, after relocating to a larger facility, Susan Bates, Inc., donated its abandoned factory in Chester to the Goodspeed Opera House Foundation. An intimate 200-seat performing space, The Norma Terris Theatre was fully renovated, opening its doors on July 10, 1984 with the new musical *Harrigan 'n' Hart*.

PAST GOODSPEED PRODUCTIONS

2002	2005	2008
Dames at Sea	Seven Brides for Seven Brothers	Happy Days
Babes in Arms	The Boy Friend	Half a Sixpence
King of Hearts	Abyssinia	Big River
*Actor, Lawyer, Indian Chief	*Flight of the Lawnchair Man	*Emmet Otter's Jug-Band Christmas
*The Road to Hollywood	*Amour	o° 13
*The Baker's Wife	*The Girl in the Frame	o° The Story of My Life
2003	2006	2009
Me and My Girl	Li'l Abner	42 nd Street
Very Good Eddie	Pippin	Camelot
A Tree Grows in Brooklyn	Pirates of Penzance	A Funny Thing Happened on the Way to the Forum
*Stand By Your Man: The Tammy Wynette Story	*Caraboo, Princess of Javas	*Lucky Guy
*Camille Claudel	*The 60's Project	Jim Henson's Emmet Otter
*O. Henry's Lovers	*Meet John Doe	
2004	2007	2010
Call Me Madam	Singin' in the Rain	Annie Get Your Gun
Where's Charley?	High Button Shoes	*Band Geeks!
Mack & Mabel	1776	Carnival!
o° All Shook Up	*Happy Days	*Radio Girl
*Princesses		How to Succeed in Business Without Really Trying

For a complete list of Goodspeed Musicals' past productions from 1963 to the present, please visit our website at www.goodspeed.org/shows_past.aspx

o° Went on to Broadway + Produced at The Norma Terris Theatre *World Premiere



ABOUT GOODSPEED MUSICALS



The cast of *Radio Girl*, 2010

Goodspeed Musicals was first formed as The Goodspeed Opera House Foundation in 1959 to restore the 19th century Goodspeed Opera House as a professional theatre. Under the direction of Michael P. Price since 1968, Goodspeed has achieved acclaim as the home of musical theatre. Mixing classics by the Gershwins, Cole Porter, and Jerome Kern with the very best of this country's newest musicals, such as *Annie*, *Man of La Mancha*, and *Shenandoah*, Goodspeed pioneered the practice of rethinking, restoring, and revitalizing America's musical theatre heritage. Nineteen Goodspeed productions have gone on to Broadway, receiving more than a dozen Tony Awards.

Goodspeed Opera House

Dedicated to the preservation and advancement of musical theatre, Goodspeed produces three musicals April through December on its mainstage in East Haddam. Goodspeed itself has been awarded two Special Tony Awards, one in 1980 for outstanding contributions to the American musical and a second in 1995 for distinguished achievement for a regional theatre.

Located in rural East Haddam on the Connecticut River, the historic Victorian-style Opera House takes musicals from the past and brings them to life for today's audiences.

New Musicals at The Norma Terris Theatre

Goodspeed is at the forefront of shaping the future of musical theatre. At The Norma Terris Theatre, located in nearby Chester, Goodspeed develops new musicals and nurtures emerging artists. Goodspeed has launched over 50 musicals into the theatre world at The Norma Terris Theatre, giving composers and authors the opportunity to develop their material through actual production. Audience response is a vital part of this theatre. Regular input is actively sought through "Talkback" discussions with the creative staff, giving audiences the opportunity to play a part in creating a new musical.

The Scherer Library of Musical Theatre

The Scherer Library of Musical Theatre is integral in perpetuating our national musical theatre heritage. The Library preserves scores, sheet music, scripts, original cast recordings, playbills, and theatre memorabilia. In addition to making this collection available for study and research, the library provides the Goodspeed creative staff with original source material to assist in the faithful re-creation of musicals.

The Max Showalter Center for Education in the Musical Theater

In 2002, Goodspeed Musicals established The Max Showalter Center for Education in the Musical Theater. The Center encourages and nurtures musical theatre artists and students by providing a unique and comprehensive array of training and educational programs to serve both the national and local academic communities. As a part of that mission, the Center conducts the annual Goodspeed Musical Theatre Institute in collaboration with New York University's Tisch School of the Arts and The Hart School at the University of Hartford. In addition, it offers education pages on Goodspeed's website, allowing visitors to further participate in and appreciate the rich and vibrant world of musical theatre. For more information, please call Education Director Joshua S. Ritter at 860.873.8664, ext. 745.



WILLIAM H. GOODSPEED LEGACY SOCIETY

Honoring Those Who Have Made a Commitment to Provide for the Future of Goodspeed Musicals

By remembering Goodspeed through a planned gift, you can ensure that your legacy of support, so important to our production of highest quality musical theatre, continues for future generations. The William H. Goodspeed Society was created to recognize those who have included a future bequest to Goodspeed in their wills or estate plans.

Anonymous (7)
Edward Cape
Michael Chaiklin
Amy Lee Crockett, DVM
Stephen B. Crowley, III
Richard Goodman
Norwick R. G. and
Elizabeth Jane Goodspeed

Mrs. Harry J. Gray
Martha D. "Pepper" Hitchcock
Mr. and Mrs. Robert P. Jones
John Kartovsky
Ruth Katz
Dorothy Liepertz
Andrew C. McKirdy
Leslie and Lynne Nathan

Jane E. Ondovcsik
Peter and Janet Otto
Michael and Jo-Ann Price
Mary Jane Richilson
Dr. Anne L. Rothstein and
Ms. Jane Hellman
Richard and Mary Schneller
Sheila L. Tomlinson
Mark and Roberta Velez

Goodspeed Musicals Funds and Endowments

The funds and endowments listed below were established during lifetime, by bequest, or in memoriam with an outright gift to Goodspeed Musicals.

The Frederick A. and Justine Millspaugh Catlin Family Fund
The Arthur and Elizabeth Godbout Fund for the Support of the Music Department
The George S. and Charmian A. Goodspeed Memorial Fund
The A. Nicholas Groth, Ph.D. Charitable Gift Annuity*
The Richard G. and Elizabeth F. Kehoe Charitable Gift Annuity*
The Charles R. Lindberg Family Fund
The Maryann and Jane E. Ondovcsik Fund for the Preservation of the Victorian Goodspeed Opera House
The Salvatore Marzano, Jr. Memorial Student Scholarship Fund
The Elaine McKirdy Intern/Apprentice Endowment
The Charlotte and Gerald Sandler Educational Endowment
The Scherer Library of Musical Theatre Fund
The Max Showalter Center for Education in the Musical Theater
The Ashton M. Tenney, Jr. Memorial Annuity Fund*

**The donors receive an income stream during their lives and a named fund or endowment will be created when the annuity reverts to Goodspeed Musicals. For further information on how you can ensure your legacy of support with a Planned Gift to Goodspeed Musicals, please contact Gloria Gorton, Director of Major Gifts, PO Box A, East Haddam, CT 06423, 860.873.8664, ext. 366 or e-mail gloria.gorton@goodspeed.org.*

Special Gifts

Goodspeed Musicals is grateful to those who have made a special gift during the 2010 season. They include:
Suzanne and Donald Joffray
Benjamin B. Liveten Charitable Grand Nephew Trust
Benjamin B. Liveten Charitable Grand Niece Trust
Carol Sirot

Memorial Gifts

In Memory of Donald and Selma Daren by
Dr. and Mrs. Patrick F. Doherty
In Memory of Jerome Teitelbaum by
JoAnn Schwatzman

Goodspeed fondly remembers those who left a bequest or in whose honor a memorial fund was established. Their love of musical theatre and our institution is an example to us all.

The Milon Barnes Memorial Fund
Cynthia Kellogg Barrington
Leonard N. Blake
Fellner Family Foundation
Albert D. Firestone
Henry Sage Goodwin Memorial Fund
The Edith O. Haynes Trust
Martha C. Hinkel
Thomas W. Holton Memorial Fund
The Adrienne I. Koch Revocable Trust
William J. Kochen Memorial Fund
The Edward Mills Memorial Fund
Edith L. Nyman
Rochelle Richilson
Barbara V. Ross
Bertha L. Rottmann
Martha Shattuck
John F. Single, III



THE GOODSPEED OPERA HOUSE FOUNDATION

The Goodspeed Opera House Foundation, chartered by the State of Connecticut as a charitable, educational, non-profit organization, is charged with the responsibility of maintaining the Goodspeed Opera House both as a historic landmark and as a living theatre. The objective of the Foundation is the establishment and development of a nationally recognized regional theatre of which its members and supporters can be justly proud.

2010 BOARD OF TRUSTEES

Francis G. Adams, Jr.
John Barlow
Myron R. Bernstein*
David W. Bogan
J. Robert Buchanan*
Jeffrey D. Butler
Russell Carter
Theodore S. Chapin
Kay Knight Clarke
Alvin Deutsch
David F. Frankel
Robert B. Friedman
Norwick R. G. Goodspeed**
Helen Gray
John H. Hamby
Jeffrey S. Hoffman
Lynde S. Karin
John S. Kartovsky**
Mary Ellen Klinck
Robert A. Landino
Mark Masselli
F. Patrick McFadden, Jr.
Lawrence McHugh
Robert Roy Metz*
Robert F. Neal
Eric D. Ort
Muriel S. Paris
Michael P. Price
Hila Rosen
Susan Scherer
Richard F. Schneller**
H. William Shure*
Joseph Smith
Viola Tagliatela
DeRoy C. Thomas
Mark Wainger
John F. Wolter
Dona D. Young*

**Emeritus Trustee*

***Honorary Trustee*

OFFICERS

M. Jodi Rell,
Ex Officio Honorary Chairman
DeRoy C. Thomas,
Chairman of the Board
Francis G. Adams, Jr., *President*
John Wolter, *First Vice-President*
Jeffrey S. Hoffman, *Vice President*
Eric D. Ort, *Secretary*
Mark Masselli, *Treasurer*
McLaughlin & Stern,
General Counsel

PAST PRESIDENTS

Marian D. Terry
Muriel W. Selden +
Bernard Knollenberg
Noel M. Davis +
Hal James
Beatrice H. Rosenthal+
Alan C. Davis
Noel B. Gerson
John H. Hamby +
Norwick R. G. Goodspeed +
Richard F. Schneller +
Robert F. Neal +
DeRoy C. Thomas

+ also served as Chairman of the Board

GOODSPEED COUNSELORS

Richard T. Cersosimo and
Valerie J. Koif
Catherine Ladnier and
J.M. Robinson
Mr. and Mrs. Charles R. Lindberg
Andrew and Bonnie Lee McKirdy
Saul Rosen
Dr. Anne L. Rothstein and
Ms. Jane Hellman
Chuck and Dianne Ramsey
Anthony and Chelsea Michaud
Sandra Anagnostakis
Carl and Jessica Thompson
Edgar E. Shirley
Carol Adams Dahlke
Leonardo H. Suzio

THE SCHERER LIBRARY OF MUSICAL THEATRE AT GOODSPEED ADVISORY BOARD

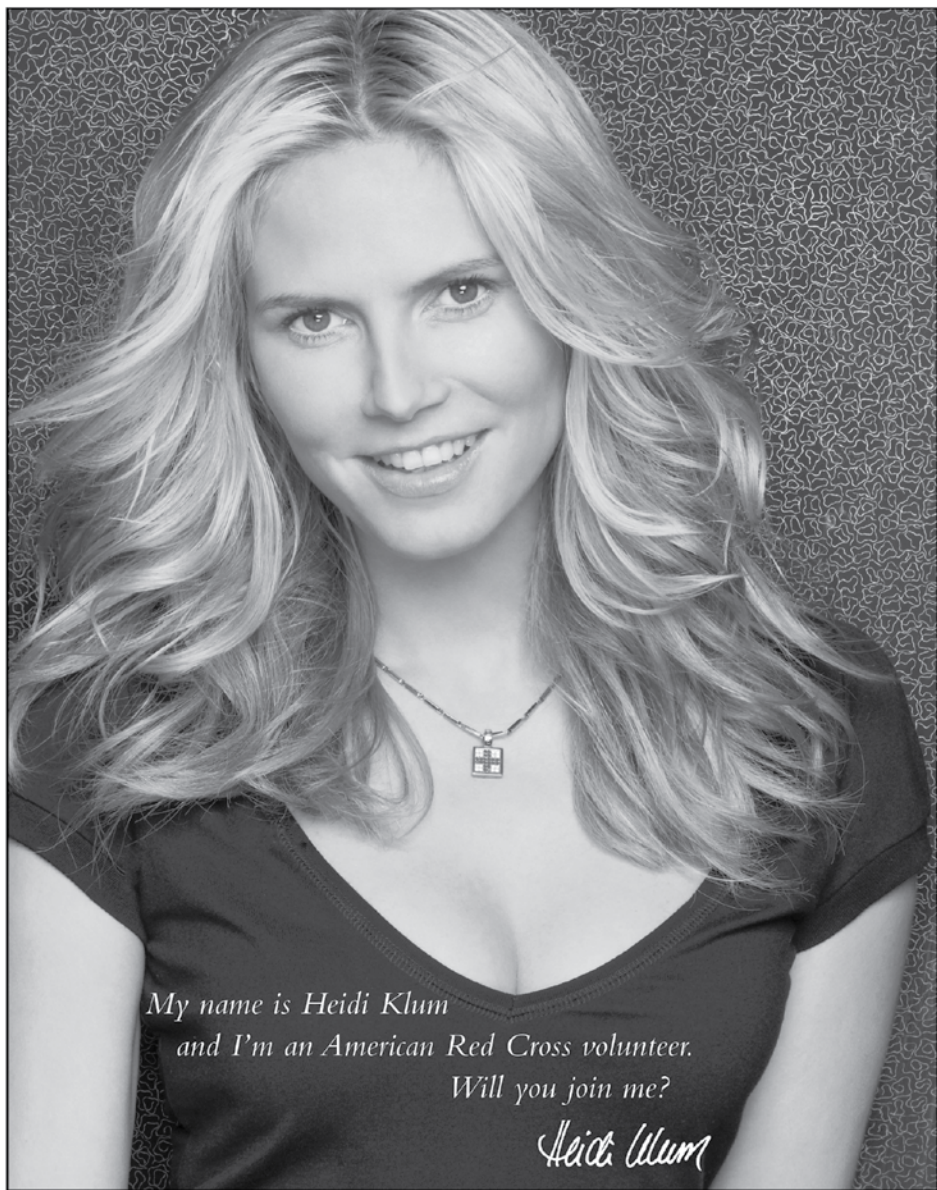
Ken Bloom
Theodore S. Chapin
Alvin Deutsch
Brian Drutman
David Hummel
Michael A. Kerker
Robert Kimball
Bruce Pomohac
Bill Rosenfield
Henry S. Scherer, Jr.
Steven Suskin

THE MAX SHOWALTER CENTER FOR EDUCATION IN THE MUSICAL THEATER ADVISORY BOARD

Gordon Greenberg
Robert R. Metz
Jane Percy
Peter Walker
Nancy Wolf

NEW ACTOR HOUSING CAMPAIGN STEERING COMMITTEE

John Barlow, Chair
Francis G. Adams, Jr.
John P. Connolly
Robert B. Friedman
Mark Masselli
Michael P. Price
Susan Scherer
David J. Viola, Sr.
John F. Wolter
Mark Zimmerman



*My name is Heidi Klum
and I'm an American Red Cross volunteer.*

Will you join me?

Heidi Klum

WE ALL HAVE TO LOOK OUT FOR EACH OTHER.
WHEN YOU HELP THE AMERICAN RED CROSS, YOU HELP AMERICA.



THROUGH HER INVOLVEMENT WITH THE AMERICAN RED CROSS,
HEIDI KLUM HELPS TO SAVE LIVES EVERY DAY.

TO LEARN HOW HEIDI KLUM IS HELPING,
OR TO FIND OUT WHAT YOU CAN DO TO HELP, VISIT REDCROSS.ORG.

Classical Music, Jazz & More

Now You Can
Bring it home.

CD's STARTING AT

8.99

Our Online Store is a
Boutique of Thousands of
CD's, Audiobooks and DVD's

Listen Before You Buy

One of the Largest and
Fastest Growing Music
Catalogs in the Industry



www.OnStageGifts.com

POWERED BY



IMPROVING LIFE FOR ALL MIGRATORY ANIMALS.

THE BIKE PATH. YOUR OFFICE. THE BACKYARD. The environment isn't just some far off place. It's the asphalt beneath your bike, the coffee that fuels your commute, and the park where you walk your dog. And it's why the Natural Resources Defense Council is working to protect the most important places on Earth. For easy ways to help protect your environment, go to NRDC's how-to website, SimpleSteps.org.

Because the environment is everywhere.





A Public Service of
This Publication

WE LIVE IN THE HOUSE WE ALL **BUILD.**

Every decision we make has consequences. We choose what we put into our lakes and rivers. We choose what we release into the air we breathe. We choose what we put into our bodies, and where we let our children run and play. We choose the world we live in, so make the right choices. Learn what you can do to care for our water, our air, our land and yourself at earthshare.org. Earth Share supports more than 400 environmental and conservation organizations that impact you every day.

Visit us at earthshare.org



Earth Share



American Heart
Association. 
Learn and Live.

American Stroke
Association.

A Division of American
Heart Association

Lobbyist

You don't have to be a high-powered lobbyist to call on Congress—just a healthcare professional who volunteers her time to prescribe a lifesaving message. American Heart Association advocates are part of a nationwide network of people dedicated to finding a cure for heart disease. They contact legislators to lobby for more funding for medical innovations, paving the way for lifesaving medical advances like new drugs to control high blood pressure and lower cholesterol, pacemakers and coronary bypass. Join us and you too can save lives from the nation's No. 1 killer—heart disease.

Heart Disease. You're the Cure.
www.americanheart.org/yourethecure



GOODSPEED MUSICALS STAFF

ADMINISTRATION

Harriett Kittner *General Manager*
 Edward C. Blaschik *Theatre Manager*

Donna Tafel *Assistant to Michael P. Price*

William F. Nivison *Director of Finance*
 Joanne D'Amato *Accounts Payable Manager*
 Samantha Scaniffe *Payroll Manager*

Caitlin A. Quinn *Director of Development*
 Sara Breen *Manager of Corporate and
 Foundation Relations*
 Gloria Gorton *Director of Major Gifts*
 Mary Miko *Special Events Coordinator*
 Sue Cipriani *Development Operations Manager*

Dan McMahan *Director of Marketing and
 Public Relations*
 Lori A. Cartwright *Advertising Manager*
 Elisa G. Hale *Public Relations Manager*
 Diane Sobolewski *Official Photographer*

Michele R. Baumann *Member Relations Manager*
 Shannon Robbins *Membership Secretary*

Cinda Abercrombie Barbuto *Ticket Sales Manager*
 Elizabeth Diamond *Box Office Manager*
 Rachael N. Carlson *Assistant Box Office Manager*
 Roger-Paul Snell *Box Office Supervisor*
 Madeleine Holly, Catherine Joseph, Shanna Lisitano,
 Jennifer Marco, Barbara Wilkinson,
 Alicia Wilmes *Box Office Representatives*
 William Addison *Subscription Services Manager*
 Madeleine Holly, Kim Kane, Linda Misarski,
 Rebecca Shea *Subscription Services
 Representatives*
 Meg C. Chapell *Group Sales Manager*

Kristan McLaughlin *Company Manager*
 Elise Vaux *Assistant Company Manager*
 Nicole Herrington *Company Assistant*

Joshua S. Ritter *Education Director/Librarian*
 Katie Griswold *Education Assistant*
 Jeffrey Mays *Systems Administrator*
 Linda Benson *Receptionist*

Mary Miko *House Manager*
 Laura Harrison *Assistant House Manager*
 Bob Bennett, Peter Loffredo *Bartenders*
 Marilyn Rybak *Building Services Assistant*
 Stephen Moore, Robert Myska *Building Services*

PRODUCTION

Adam Goodrum *Technical Director*
 Andrew Becker *Assistant Technical Director*
 Chris Phillips *Master Carpenter*
 Tyler Donahue, Rasta Gronback,
 Zeb Hults, Chris Petrizzo *Shop Carpenters*
 Mic Murphy *Opera House Stage Carpenter*

Carla Tiezzi *Charge Scenic Artist*
 Katie Zeranski *Staff Scenic Artist*

Ellen Lampros *Props Manager*
 Troy A. Junker *Master Artisan*
 Thomas Stephansky *Journeyman Artisan*
 Avery Jennings *Props Artisan*
 Lou Fuchs *Props Carpenter*
 Aaron Peraza-Baker *Opera House Props Run Crew Head*
 Tonett Smith *Opera House Props Show Runner*

Cindy Kubala *Costume Director*
 John Riccucci *Opera House Wardrobe Master*
 Emma Mead *Opera House Wigs Artisan*

Jay Hilton *Lighting and Sound Supervisor*
 L. Clay Little *Opera House Production Electrician*
 Jessica Murphy *Opera House Production
 Sound Engineer*

Erica Largen *Assistant Production Manager*

Brandon Magid *Music Assistant*

Njaye Olds *Costume Rental Manager*
 Dawn Barlow, Lori Bisaccia, Alyssa Fetera, Catherine Joseph,
 Jennifer Tellier *Costume Rental Assistants*

FOR THIS PRODUCTION

Otis Cook *Assistant to the Choreographer*
 Jesse Belsky *Assistant Lighting Designer*
 Eric Miller *Stage Carpenter*
 Alanna Maniscalco *Props Run Crew Head*
 Byron Batista *Wardrobe/Wig Master*
 Mike Lastella *Master Electrician*
 Erin Ryan *Light Board Operator*
 Kristin Rizzo *Lighting & Sound Technician*
 Joshua DeBernardi, Evan DelGaudio
 Alex Zinovenko *Electricians*
 Samantha Gallardo *Production Assistant*
 Will Reynolds *Music Copyist*
 Molly Sturges *Piano Technician*
 Lea Tomaszewski *Tutor*

Chris Botta, Patti Lizotte,
 Phyllis Tela *Scenic Artists*

Christopher Haug, Meghan Dougherty, Anna Hines,
 Louis Kreienkamp, Alanna Maniscalco, Eric Miller, Frank Pascale,
 Erin Ryan, Meghan Texira *Apprentices*

Elaine McKirdy Student Apprentice: Alyssandra Docherty

Special Thanks: Bank Street Cobbler, Falcetti Music Company,
 New 42nd Street Studios, Work Light Productions

IN APPRECIATION

Goodspeed Musicals would like to thank the following for their contributions to our productions: all who volunteer their time and talents to Goodspeed, The Norma Terris Theatre usher staff, the Goodspeed Guild and Production Committees, Mae Wantanabe of ZCMI Flower Shop.



for your INFORMATION

Bar and Gift Shop:

The bar and gift shop located in the lobby of the theatre are open one hour prior to curtain and during intermission.

Infra-red Hearing System:

The Norma Terris Theatre offers the Sennheiser infra-red hearing system to assist hearing-impaired patrons through the generosity of Carol Sirof. Free headsets are available from the Box Office.

Box Office Hours (at the Goodspeed Opera House):

Monday & Tuesday: 10 a.m. to 5 p.m.

Wednesday & Thursday: 10 a.m. to 8 p.m.

Friday & Saturday: 10 a.m. to 8:30 p.m.

Sunday: 10 a.m. to 3 p.m.

Box Office Telephone: 860.873.8668

Box Office E-mail: boxoffice@goodspeed.org

Website:

Visit our website at goodspeed.org to buy tickets 24 hours a day or learn more about upcoming and past productions at Goodspeed!

Visit us at   

Mailing Address:

Goodspeed Musicals
P.O. Box A
East Haddam, CT 06423-0281

Tell Us What You Think

Audience response is a vital part of The Norma Terris Theatre. In addition to discussing the production at our Thursday evening "Talkbacks," you can actively participate in the process of creating a new musical by e-mailing the creative team at info@goodspeed.org.



Goodspeed Guild:

The Goodspeed Guild is a volunteer organization dedicated to supporting Goodspeed Musicals' operations and productions. Since 1975, it has provided services to artists, patrons, and staff on a year-round basis, while offering our members the opportunity to become part of the behind-the-scenes activities at Goodspeed. To find out about volunteer opportunities that fit your interests and schedule, visit our website at www.goodspeed.org or contact Amy Campbell at 203.494.7328.

Sets, costumes and props are designed especially for The Norma Terris Theatre and are built in Goodspeed Musicals' shops.

Goodspeed Musicals is a professional theatre operating under an agreement between the League of Resident Theatres and Actors' Equity Association, the Union of Professional Actors and Stage Managers in the United States.



The scenic, costume, lighting and sound designers in LORT Theatres are represented by United Scenic Artists, Local USA-629 of the IATSE.

Goodspeed Musicals is a member of The League of Resident Theatres.



NATIONAL ALLIANCE
for MUSICAL THEATRE

ssdc The Director and Choreographer are members of the Society of Stage Directors and Choreographers, Inc., an independent national labor union.



WINVIAN IS
PROUD TO SUPPORT
GOODSPEED OPERA
HOUSE MUSICALS

WINVIAN



LITCHFIELD HILLS
CONNECTICUT

WINVIAN WARMLY WELCOMES NON-LODGING GUESTS
WWW.WINVIAN.COM • 860-567-9600



Chestelm

Health & Rehabilitation

- Short Term Rehab Care
- 24 Hour Skilled Nursing Care
- Respite Care
(short term stays to give caregiver a break)
- Outpatient Therapy
- Physical Therapy
- Occupational Therapy
- Speech Therapy
- Adult Day Care (transportation provided)

All Insurances Accepted—
Medicare, Medicaid, All Private Insurances



CALL FOR INFORMATION **860-873-1455**

534 TOWN STREET • EAST HADDAM, CT

POLITO & QUINN, LLC

National Board Certified Trial Attorneys

Attorneys Polito and Quinn are
pleased to have been selected to
Connecticut Super Lawyers®
for the 3rd Consecutive Year

And
New England Super Lawyers



Michael J. Quinn, Esq.
Admitted in CT



Humbert J. Polito, Jr., Esq.
Admitted in CT & RI

Trials in All State & Federal Courts in Connecticut & Rhode Island

- | | | | |
|--|--------------------------|------------------------|--------------------------------|
| Personal Injury &
Wrongful Death Claims | • Auto & Cycle Accidents | • Fall Down Accidents | • Brain & Spinal Cord Injuries |
| Medical
Malpractice | • Defective Products | • Dog Bites & Attacks | |
| | • Failure to Diagnose | • Physician Negligence | • Hospital Negligence |
| | • Birth Injuries | • Nursing Negligence | |

(860) 447-3300 567 Vauxhall Street Ext. Suite 230, Waterford, CT
www.politoandquinn.com



WESTBROOK INN

Bed & Breakfast

Voted The Most Elegant Inn

Westbrook, CT
800-342-3162 • www.westbrookinn.com

Visit Our Sister Inn
www.bushnellhouse.com
Westbrook, CT

BUSHNELL
HOUSE
HISTORIC INN



EST 1840



Resident Jacqueline Jacobsen with son Garry and Staff at The Saybrook at Haddam.

France, Venezuela, Spain, Brazil, and beyond. Jacqueline has lived and traveled across the globe. Now, her travels have taken her to The Saybrook at Haddam to be near her son, Garry – and to enjoy gracious living and quality care.

“I feel as though my family has grown,” she says, referring to her new friends, and the staff that cares for her each day. Jacqueline and her son have peace of mind knowing more assistance with daily living is available if needed.

Let your journey take you to The Saybrook at Haddam. Call today for a private tour at 860-345-3779.

“Life has taken me far and wide... and my journey has brought me to The Saybrook at Haddam.”



An Assisted Living Retirement Community

1556 Saybrook Road, Haddam, CT www.thesaybrookathaddam.com



One gift, 60 choices.

Give the gift of our fine shops and restaurants. Gift cards can be purchased at the Mohegan Sun Box Office or mohegansun.com.



The 
SHOPS At
Mohegan Sun

**Sometimes
cravings begin
after you dine.**

Indulge yourself in our collection of unique shops after you've sampled one of our fine restaurants. Convenient and accessible, yet oh so hard to leave. Located in Mystic Country. For more information, call 1.888.226.7711 or visit mohegansun.com.

If **you** value education
belong
@ Williams



The Williams School

Open House Oct 7, Nov 15 & Jan 9

grades 7-12 | coed day school | transportation available | 182 Mohegan Avenue, New London, CT
860-439-2756 | www.williamsschool.org | admissions@williamsschool.org

LOGOWEAR

No Minimum Order
No Set-Up Fee

STARTING AT
19.99

PLUS SHIPPING & HANDLING



YOUR LOGO HERE

**Whether You Need
1 shirt or 1,000**

*Ideal for Small Business Owners,
Clubs or Organizations*

100% Satisfaction Guarantee

High Quality and Low Pricing

See Before You Buy

Quick Turnaround

Choose from apparel,
hats, golf towels,
blankets and **MANY** more

Visit our website at
www.OnStageLogos.com

Curds & Whey

Artisan Cheese and Fine Foods

Specializing in hard to find European and Domestic cheeses



1 Boardman Rd. East Haddam, CT

860.873.8378

www.curdsandwheyct.com

fall for fish!



the fish sisters
clothing & accessories

You'll love our selection of great fall clothing,
comfy sweaters, accessories, holiday gifts and more!

2 norwich road, east haddam, ct 06423 860-873-1326

Hours: Tuesday-Sunday 10-5

(Just up the road from the Goodspeed!)

ANIMAL EMERGENCY HOSPITAL OF CENTRAL CONNECTICUT

588 Cromwell Avenue, Rocky Hill CT 06067
Exit 23 off I-91

Monday through Thursday 5:30pm to 8:00am
Friday 5:30pm through Monday 8:00am
24-hour coverage on all major holidays

(860) 563-4447

www.animalemergencyct.net

The Top 10 Warning Signs That Your Pet Needs Immediate Treatment

1. Breathing Difficulties
2. Serious Bleeding
3. Major Trauma
4. Lacerations & Bite Wounds
5. Collapse/Loss of Consciousness
6. Poisoning
7. Prolonged Vomiting or Diarrhea
8. Infections
9. Difficulty Urinating or Defecating
10. Eye redness/tearing or spasms

Jason Haviar, DVM

Beth Bruns, DVM

Chris Gargamelli, DVM

*"Working in conjunction with **YOUR** veterinarian for the well being of your pet."*

We love the Music!

*Enjoying the arts adds
vitality to our lives.*

*More life enriching qualities
are included in our*

HealthyLife™ Services program.

*Ask Marian about the art of living
at Chester Village West*

(860) 526-6800



Exceptional Service, Established Charm, Exciting Future.

317 West Main Street • Chester, CT 06412

(860) 526-6800 • Fax (860) 526-6018

www.ChesterVillageWestLCS.com



A Life Care Services Community



© 2010

Bishopsgate Inn



Built in 1818 by Horace Hayden, a merchant and shipbuilder, this exceptional Colonial Home welcomes guests seeking gracious hospitality and well appointed accommodations in a secluded setting in the middle of town.

Wireless Internet and TV availability

GOODSPEED LANDING • P.O. BOX 290
EAST HADDAM, CONNECTICUT 06423

TELEPHONE:

860-873-1677

www.bishopsgate.com

THE KAGEL FAMILY, INNKEEPERS

COPYRIGHTS - TRADEMARKS

INTERNET LAW

Frederick A. Polner, Esq.

POLNER LAW OFFICE

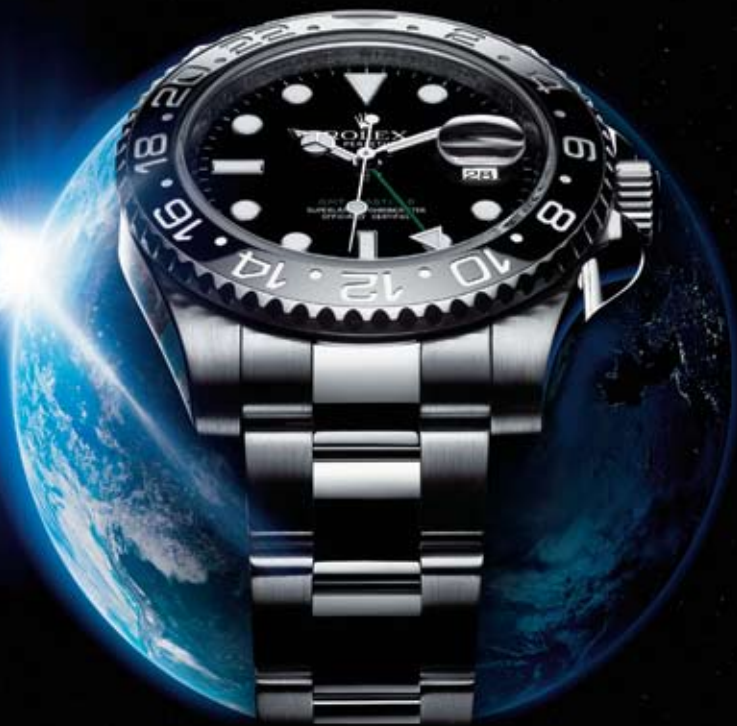
16 Forest Hills Drive
Madison

fred@polnerlaw.com

THE PILOT'S WATCH

The Oyster Perpetual GMT-Master II is the ultimate reference chosen by professionals who fly the world. In 1955, the first GMT-Master was developed together with Pan Am pilots, to ease the adjustment when changing time zones. Today, its successor allows pilots to read three time zones, keeping them punctual in any one. The GMT-Master II is recognized as invaluable to professionals and serious travelers around the world. Visit ROLEX.COM. And explore more.

THE GMT-MASTER II



LUX BOND & GREEN

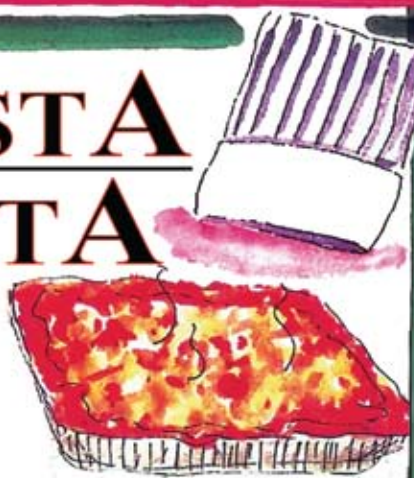
SINCE 1898

West Hartford Glastonbury Mohegan Sun
South Windsor Greenwich Westport
Boston Wellesley 860.521.3015



ROLEX

PASTA VITA



The Place to Go for Gourmet to Go
HOURS:

Monday-Friday 8-6

Saturday 8-5:30

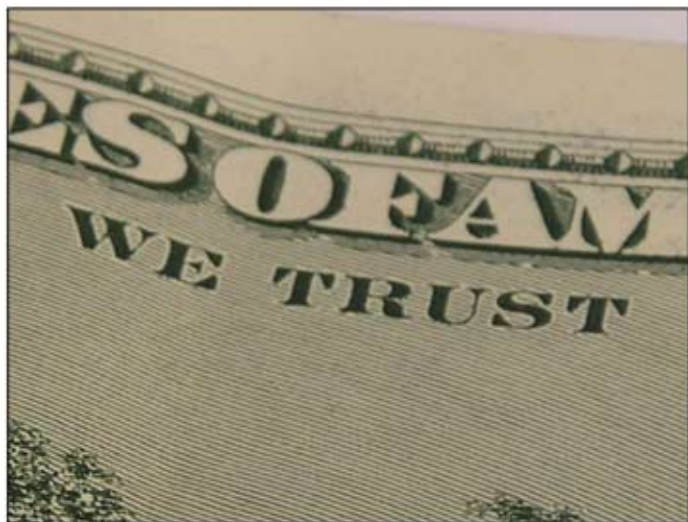
860-395-1452

pastavita.com



Old Saybrook, CT

Some companies may have lost sight
of the fine print on certain documents.



We haven't.

Clients are the assets that matter.

The professionals at St. Germain Investment Management recognize that a standard exists when it pertains to fiduciary responsibility. Because at the end of the day, what matters most is the answer to this question:

"Is this decision in the best interest of our client?"



LEADING INVESTORS SINCE 1924™

100 Pearl Street
Hartford, CT 06103
860-727-9530

1500 Main Street
Springfield, MA 01115
413-733-5111



www.stgermaininvestments.com





Life is a giant adventure...

So you'll want trusted financial
advice along the way.

For more information,
call Infinex Representative
Connor Dolan at
(203) 453-5492.



Financial
Management
& Trust
at Guilford Savings Bank
gsb-yourbank.com

Estate Planning & Administration • Investment Management • Trustee & Executor Services
GUILFORD MAIN • GUILFORD PLAZA • BRANFORD • NORTH BRANFORD • MADISON • NORTH MADISON • OLD SAYBROOK

Select securities offered through INFINEX INVESTMENTS, INC. Member FINRA/SIPC. Infinex and the Bank are not affiliated.
Other services are provided by the Bank.

NOT A DEPOSIT • NOT FDIC-INSURED • NOT INSURED BY ANY FEDERAL GOVERNMENT AGENCY • NOT GUARANTEED BY THE BANK
MAY GO DOWN IN VALUE • SUBJECT TO INVESTMENT RISK • SEEK LEGAL ADVICE REGARDING LEGAL OR TAX MATTERS FROM A QUALIFIED ATTORNEY